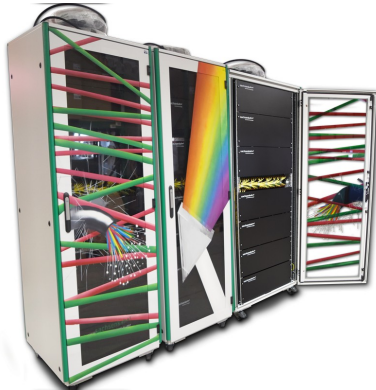


2025-04-04



## Cabinet System TiRAX (6R02-0003)



*Cabinet System TiRAX*

### Product Description

2100x800x800mm

42 U in 23" extension

color: RAL 7035 (light grey) incl. high-quality paint finish (graffiti from Garlix)

incl. multifunctional crossbars on both sides for cable routing

incl. 4 x swivel castors (2 with parking brake)

incl. viewing door with toughened safety glass (tinted) with swivel lever

incl. rear door closed with swivel lever

incl. 2 x plug-in door (side panels)

assembled with:

2 x patch panel 23", 1 U, RAL 9011 (black) incl. 24 SC/APC dx adapter

1 x cable management panel 23", 1 U, RAL 9011 (black)

1 x subrack 23", 5.5 U, RAL 9011 (black) with



6 coils 50 km each

in accordance with G.652.D (Corning SMF28 Ultra)

terminated with SC/APC 9°

installed on patch panel

1 x subrack 23" , 5.5 U, RAL 9011 (black) with

12 coils 10 km each

in accordance with G.652.D (Corning SMF28 Ultra)

terminated with SC/APC 9°

installed on patch panel

2 x subracks 23" , 5.5 U, RAL 9011 (black) with a total of

12 coils a 40 km

in accordance with G.652.D (Corning SMF28 Ultra)

terminated with SC/APC 9°

installed on patch panel

3 x subrack 23" , 5.5 U, RAL 9011 (black) with a total of

9 coils a 80 km (50 + 30km spliced)

in accordance with G.652.D (Corning SMF28 Ultra)

terminated with SC/APC 9°

installed on patch panel

